



Michelle Albring



Seth Copsey



Dustin Crumbaugh



Matt Crumbaugh



Eric Fabus



Carry Felton



Sue Harrell



Misty Henderson



Thomas Jungnitsch



Terri Kral



Jody Leiner



Kristin Mephram



Erin Miller



Jason Myers



Katrina Payne



Angela Peters



Heather Polash



Matthew Schueller



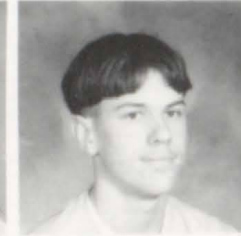
Lisa Strnad



Dianne Surdock



Mindy Wallen



Jonathon Whitford



Melissa Wicke

Most people would agree that numbers don't always reflect the abilities of a group. The sophomore class is a prime example of this. They may be the smallest class in the school, but it's their different personalities that shine through and pull this class together.

"The boys are so carefree and the girls are extremely de-

termined," class sponsor Mrs. Marcie Fabus commented. "They're quite the opposite, but when a job needs to be done, it's done right," added Mrs. Fabus.

Matt Crumbaugh made that difference clear by commenting, "The girls may do most of the work, but it wouldn't get done without us guys supervising."

One example of how this class pulls together was Christ-

mas decorating contest, in which they tied for first place. "A lot of our class helped decorate. It really shows what we can accomplish as a class," commented Misty Henderson.

A small class with diverse personalities. Two things that may conflict, combine to form a unique group... the sophomores.

Stacie Fabus

TOGETHER FOREVER Heather Polash and Matt Crumbaugh dance the night away at the Homecoming dance. Heather and Matt were the sophomore representatives.

